

المدرسة الهندية
الجديدة
أم القيوين



THE NEW
INDIAN SCHOOL
Umm Al Quwain

THE NEW INDIAN SCHOOL

UMM AL QUWAIN

**NIS CYBER OLYMPIAD
QUESTION BANK**

Organized by: I.T. Department

For

GRADE:6

Note: The syllabus of NCO is based on Windows 7 and MS Office 2010. The test paper is divided into three sections.

Sample Questions

LOGICAL REASONING

- The given equations are solved on the basis of a certain system. On the same basis, find out the correct answer from amongst the options.
If $12 - 5 = 84$, $10 - 5 = 50$, $8 - 5 = 24$, then $6 - 5 = ?$
(a) 11 (b) 30 (c) 6 (d) 1
- If the first half of the English alphabet is reversed and then next portion of English alphabet is reversed so as 'A' takes the position of 'M' and 'N' takes the position of 'Z' in English alphabet series, then which letter will be 6th to the left of 17th letter to the right of 7th letter from the left end?
(a) U (b) V (c) C (d) D
- If 'Request' is written as 'S2R52TU', then how will 'ACID' be written?
(a) BDJE (b) 1394 (c) B3J4 (d) 1D3E
- If P is brother of Q and R is sister of Q, then how is Q related to P?
(a) Uncle (b) Father
(c) Brother (d) Can't be determined

COMPUTERS AND INFORMATION TECHNOLOGY

- What can be used with a PRINT statement for printing multiple values in a single line in QBASIC?
(a) Comma (b) Semicolon
(c) Tab (n) (d) All of these
- Your school library has different types of printers connected to the school computer. One day only one printer was working and the others were being serviced. That day, when you were printing a story it was not printing. You called library assistant for some help, and, he did something and it printed the page correctly.

What did the assistant do – such that the story printed correctly?

- He might have rebooted the computer.
- He selected the functional printer in the print dialog.
- He rebooted the printer.
- None of these

- Match the following QBasic commands with the output they produce.

Column I	Column II
(i) PRINT 4 + 5	(A) 1
(ii) PRINT 16 MOD 3	(B) 256
(iii) PRINT 16 MOD 3	(C) 9
(iv) PRINT 4^7	(D) 48
(v) PRINT 16*3	(E) 5
(a) (i)-(C), (ii)-(D), (iii)-(E), (iv)-(B), (v)-(A)	
(b) (i)-(C), (ii)-(A), (iii)-(E), (iv)-(B), (v)-(D)	
(c) (i)-(C), (ii)-(E), (iii)-(A), (iv)-(B), (v)-(D)	
(d) (i)-(C), (ii)-(A), (iii)-(B), (iv)-(C), (v)-(D)	

- Which of the following devices is used for printing high-quality graphics, charts, tables and diagrams?



- Pratik has created a document in MS Word 2010. He has referred several books and periodicals while creating the document. He now wants to enter names of sources which he has referred to at the end of the document, with proper references to the same in the body of the document. Which of the following should he use?






- Footnote
- Endnote
- Footer
- TOC

- Find the odd one out.

- www.peoplefinders.com
- www.facebook.com
- www.google.com
- www.anywho.com

- Given below is a business card which contains a graphical image which is called the QR-code. What does the QR-code on the card signify?

- The QR-code is the logo of the company. They are into business of generating QR-codes.
- The QR-code contains all relevant information about the company and can be stored in the address book of a mobile device having a QR code reader.
- The QR-code contains a coded logo of the organization.
- None of these

12. Which of the following is NOT a spreadsheet package?
 (a) Lotus 1-2-3 (b) Sybase
 (c) Quattro Pro (d) WingZ
13. Which of the following is NOT an advantage of MICR?
 (a) Documents prepared for MICR are difficult to forge.
 (b) Banks can process millions of cheques with 100% accuracy.
 (c) It can read data even if the document is smudged or crumbled.
 (d) It is suitable for inputting large amounts of data.
14. Identify the input device shown in the image.
 (a) Wireless mouse (b) Braille keyboard
 (c) Ergonomic keyboard (d) Joystick
15. The first digital computer capable of displaying real time text and graphics on video terminal, which was a large oscilloscope screen, was _____.
 (a) Apple I (b) Whirlwind
 (c) Mark I (d) Cray-I
16. Which of the following is a first commercial computer to use GUI?
 (a) Lisa (b) Altair 8800
 (c) Apple II (d) Cray-II
17. Identify the given logo.
 (a) Reddit (b) Ddig
 (c) Twitter (d) Tweetmeme 
18. Which of the following is NOT a valid name of a variable in QBasic?
 (a) LETA\$ (b) a%b_c
 (c) a\$b% (d) a12\$
19. DVD+R DL is a type of DVD that provides _____.
 (a) Two recordable dye layers on a single sided disc
 (b) Multiple recordable layers on a double sided disc
 (c) One layer to be recorded twice
 (d) Both (B) and (C)
20. Woxi Media smartPod is a device recently launched that _____.
 (a) Allows user to browse internet, download apps, play games etc. on TV
 (b) Is both a tablet and smartphone
 (c) Can be connected to desktop to watch TV
 (d) Is a mp3 player used to listen to music
21. A technology by which user can view a media file in real time, without having to wait for it to be downloaded is _____.
 (a) Video streaming (b) Video conferencing
 (c) Video uploading (d) Realtime video
22. Which of the following is NOT a string constant in QBASIC?
 (a) "My_program" (b) "01,234"
 (c) Mynames\$ (d) "Newvar"
23. Identify the following.
 • It is a character recognition device.
 • It read characters written in E-13 B and CMC-7 fonts.
 • It is mainly used in banking industry.
 (a) Barcode reader (b) OCR
 (c) OMR (d) MICR
24. What would be the output of the given QBASIC code, if the user enters 15 for variable b?
 INPUT b
 PRINT a, b
 (a) 0 15 (b) 0 0 (c) 15 0 (d) 15
25. CRT monitors were replaced by TFT monitors because _____.
 (a) They were too bulky
 (b) They consumed more power than TFT monitors
 (c) They emitted lots of heat radiation
 (d) All of these
26. Which of the following input devices is operated by sensing the force applied by user and is typically mounted on a computer keyboard?
 (a) Pointing stick (b) Sense stick
 (c) Mouse (d) Stylus
27. Which of the following is a volatile storage media?
 (a)  (b) 
 (c)  (d) 
28. Which of the following is NOT a relational operator in QBASIC?
 (a) = (b) <> (c) <= (d) !=

ACHIEVERS SECTION

29. Duo, Pro-HG, Pro Duo are different varieties of a _____.
 (a) Zip Disk (b) CD
 (c) DVD (d) Memory Stick
30. MRAM is a type of RAM that retains data even after power supply is cutoff, what does 'M' stand for?
 (a) Magnetic (b) Magnetoresistive
 (c) Magnified (d) Mobile

Answers

1. c	4. c	7. b	10. b	13. b	16. a	19. a	22. b	25. d	28. b
2. b	5. d	8. d	11. b	14. b	17. a	20. a	23. d	26. a	29. d
3. d	6. b	9. d	12. b	15. b	18. b	21. a	24. d	27. c	30. b

National Cyber Olympiad

Sample Questions

- Which key is used to select multiple cells in Excel?
(a) Ctrl
(b) Shift
(c) Both (a) and (b)
(d) None of these
- Which of these is a pointing device?
(a) Graphics tablet
(b) Digital camera
(c) Light pen
(d) Scanner
- Which of these is a volatile memory?
(a) ROM
(b) EPROM
(c) RAM
(d) PROM
- Which dialog box of Excel is used to add the AutoFormat option in Quick Access Toolbar?
(a) View
(b) Excel
(c) Edit
(d) Excel Options
- Which key is used to enter the data in multiple lines of the same cell in Microsoft Excel?
(a) Alt + Enter
(b) F2
(c) Shift + F11
(d) Ctrl + Spacebar
- Which extension is used to save the QBASIC programs?
(a) .BSC
(b) .BAS
(c) .QBSC
(d) .QBAS
- The graphical objects present inside the of a Flash document are visible in the final movie.
(a) Work area
(b) Stage
(c) Both of these
(d) None of these
- Which of these QBASIC commands is used to assign a constant, a variable, or an expression to a variable?
(a) LET
(b) INPUT
(c) REM
(d) None of these

9. Which of these is not a printer?
 (a) Dot matrix (b) Daisy wheel
 (c) Drum (d) None of these
10. Excel does not allow the creation of a custom list of
 (a) Textual data (b) Number data
 (c) Both (a) and (b) (d) None of these
11. Find the odd one out.
 (a) Scanner (b) Monitor
 (c) Printer (d) Plotter
12. Find the odd one out.
 (a) Joystick (b) Daisy wheel
 (c) Light pen (d) Trackball
13. What is the extension used for a Flash document?
 (a) .asm (b) .xls
 (c) .fls (d) .fla
14. Which category of tools in Adobe Flash allows you to view the stage in different ways?
 (a) Selection tools (b) View Modification tools
 (c) Drawing and Painting tools (d) None of these
15. Which tool is used to create a point-to-point selection of the objects in Flash?
 (a) Lasso Tool (b) Selection Tool
 (c) Text Tool (d) All of these
16. Which menu is used to debug the program written in QBASIC?
 (a) Debug (b) Run
 (c) View (d) None of these
17. Which of the following is an invalid numeric variable?
 (a) Abc123 (b) ABC
 (c) CALC5 (d) s_x
18. Which of these is not a web browser?
 (a) Netscape Navigator (b) Yahoo
 (c) Internet Explorer (d) None of these
19. Wh
 (a)
 (c)
20. The
 (a)
 (c)
21. Wh
 (a)
 (b)
 (c)
 (d)
22. Wr
 (a)
 (c)
23. Wr
 (a)
 (b)
 (c)
 (d)
24. CF
 (a)
 (c)
25. Wl
 en
 (a)
 (c)
26. Wl
 (a)
 (c)
27. W
 (a)
 (c)

19. Which of these displays the related properties of a selected object in Adobe Flash?
(a) Property inspector (b) Stage
(c) Both (a) and (b) (d) None of these
20. The two main components of mail merge are
(a) Data source, data link (b) Main document, data source
(c) Main document, data link (d) Merged document, edit document
21. Which is the correct way to insert a footnote in the document?
(a) Click the Review tab and then click Footnote.
(b) Click the Insert tab and then click Footnote.
(c) Click the References tab and then click Insert Footnote button.
(d) Click the View tab and then click Footnote.
22. Which of these characters is used to give a comment in QBASIC?
(a) ' (b) :
(c) ; (d) ,
23. Which of these options can be used to insert a chart in a slide?
(a) Click the Insert Chart icon present on the placeholder of a slide.
(b) Click Insert tab and then click SmartArt button.
(c) Right click and Insert Chart from the shortcut menu that appears.
(d) All of these
24. CRT stands for
(a) Colour Ray Tube (b) Colour Ring Tube
(c) Cathode Ray Tube (d) Cathode Ring Tube
25. Which of the following tabs contains the option to insert the footnote and endnote in a document?
(a) Home (b) Insert
(c) References (d) View
26. Which category of animation effects specifies how an object leaves the slide?
(a) Exit (b) Emphasis
(c) Motion paths (d) Entrance
27. Which of the following is the shortcut key to open the File menu in QBASIC?
(a) Shift+F (b) Windows+F
(c) Ctrl+F (d) Alt+F

28. NSF stands for
- (a) National Science Foundation (b) National Students Federation
(c) National Science Federation (d) National Students Foundation
29. Which of the following tools in Flash is used for filling enclosed and empty areas of shapes with solid or gradient colours?
- (a) Spray Brush Tool (b) Paint Bucket Tool
(c) Gradient Tool (d) Pencil Tool
30. Which of the following menus is present on the menu bar in Adobe Flash?
- (a) File (b) Edit
(c) Insert (d) All of these

Stud
their
the p
easy

1.

ANSWERS

2.

- | | | | | |
|---------|---------|---------|---------|---------|
| 1. (c) | 2. (c) | 3. (c) | 4. (d) | 5. (a) |
| 6. (b) | 7. (b) | 8. (a) | 9. (d) | 10. (b) |
| 11. (a) | 12. (b) | 13. (d) | 14. (b) | 15. (a) |
| 16. (a) | 17. (d) | 18. (b) | 19. (a) | 20. (b) |
| 21. (c) | 22. (a) | 23. (a) | 24. (c) | 25. (c) |
| 26. (a) | 27. (d) | 28. (a) | 29. (b) | 30. (d) |

3.

Mental Ability

- What is the least common multiple of 6, 9 and 18?
a. 9 b. 24 c. 32 d. 18
- Which of these is a prime number but not an odd number?
a. 4 b. 18 c. 37 d. 2
- Find L.C.M. of following numbers. 12, 24, 48, 108
a. 504 b. 432 c. 405 d. 440
- The product of two numbers is 3000. If the H.C.F. of the number is 10, then L.C.M. will be
a. 30 b. 300 c. 305 d. 5.
- Which of the following fractions is closest to 0?
a. $\frac{5}{12}$ b. $\frac{2}{3}$ c. $\frac{5}{6}$ d. $\frac{3}{4}$
- Aman can type 28 words per minute. At this rate, how many words can Aman type in 5.5 minutes?
a. 154 b. 157 c. 159 d. 162
- A basket has 300 mangoes. 75 mangoes were distributed to students. The percentage of mangoes left is
a. 25% b. 30% c. 50% d. 75%.
- Gita has 558 flags to pack into boxes. Each box will hold 62 flags. How many boxes will Gita need to hold all.
a. 34,596 b. 0.9 c. 9 d. 620.
- What is the area of a rectangle that measures 5 meters wide and 6 meters long?
a. 11 m^2 b. 22 m^2 c. 30 m^2 d. 16 m^2
- The students in a wood working class were building birdhouses. It takes four pieces of wood (each piece $\frac{3}{4}$ of foot long) to build a birdhouse. At most, how many birdhouses can be made from 4 feet of wood?
a. 1 b. 3 c. 4 d. 5
- $12 + 3 \times 3 - 5 \div 4 = ?$ If $(+ = -)$, $(- = +)$, $(\times = \div)$ and $(\div = \times)$ then
a. 13 b. 31 c. 28 d. 32
- You would need to know the perimeter of something if you were
a. Buying a box big enough to hold a clock
b. Buying enough tiles to cover the floor of a room
c. Buying enough wood to make a frame for a picture
d. Buying a tablecloth big enough to cover a table
- If n represents a number, which of these means the same as the expression $n + 6$?
a. Six more than a number b. Six divided by a number
c. Six less than a number d. Six times a number

14. 40% of 75% of 80% = ?

- a. 44% b. 24% c. 50% d. 54%

15. A triangle can have

- a. Two right angles b. Two acute angles c. Two obtuse angles d. None of these

Logical and Analytical Reasoning

16. Sheena began her book by reading five pages the first day, eight pages the second day, eleven pages the third day, 14 pages the fourth day, and so on. How many pages will she read on the twelfth day in this pattern?

- a. 35 pages b. 38 pages c. 41 pages d. 44 pages

17. $22222 - 2222 + 222 - 22 + 2$ is

- a. 12345 b. 10101 c. 9901 d. 20202

18. Look at the series: 7, 10, 8, 11, 9, 12 What number should come next?

- a. 7 b. 12 c. 10 d. 13

19. Which is true?

- a. $2,934,106 < 2,873,014$ b. $2,163,489 < 2,089,634$
c. $2,874,365 < 2,897,056$ d. $2,457,831 < 2,359,678$

20. If $A = 5$, which number sentence is true?

- a. $A \times 4 = 20$ b. $A - 3 = 8$ c. $12 + A = 7$ d. $15 \div A = 10$

21. BCB, DED, FGF, HIH, ___

- a. JKJ b. HJH c. IJI d. JHJ

22. Election

- a. President b. Voter c. November d. Nation

23. Which of the following numbers is equal to 1 billion?

- a. 10 lakh b. 1 crore c. 10 crore d. 100 crores

24. Which of the following is the smallest counting number?

- a. 0 b. 1 c. 10 d. None of these

25. 15 men can finish a piece of work in 40 days. How many days the same work can be done by 20 men?

- a. 20 b. 30 c. 48 d. 15

26. The letters S and T stand for numbers. If $S + 50 = T + 100$, which expression is true?

- a. $S = T$ b. $S > T$ c. $S - T = 100$ d. $S < T$

27. Dan is Joshua's son and Guy's brother. Margaret is Guy's mother and Judy's daughter. Which of the statements below are true?

- a. Judy is Dan's mother-in-law b. Margaret is Dan's mother
c. Judy is Joshua's grandmother d. None of the above



28. Count the number of squares in the given figure.

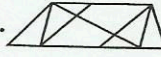


- a. 32 b. 30 c. 29 d. 28

29. Look at this series: V, VIII, XI, XIV, __, XX. What number should fill the blank?

- a. IX b. XXIII c. XV d. XVII

30. Find the number of triangles in the given figure.



- a. 8 b. 10 c. 12 d. 14

Computers and Information Technology

31. The software program that acts as an interface between the user and the www is

- a. Email b. Internet c. Protocol d. Web browser

32. Which of the following is a volatile memory?

- a. ROM b. RAM c. EPROM d. PROM

33. Following is not the characteristic of computers-

- a. High speed and huge storage b. Automation and diligence
c. Slow speed and no storage d. Electronic device

34. The _____ is a physical aspect of the computer which is governed by programs.

- a. Hardware b. Hardboard c. Hardcopy d. None

35. The central processing unit consists of

- a. ALU b. Control Unit c. Register d. All the Above

36. It is non impact printer

- a. Dot matrix b. Drum c. Inkjet d. Laser

37. Bar coding is an example of

- a. Output device b. Input device c. Storage device d. None

38. Which of the following stores more data?

- a. DVD b. CD c. Floppy d. None

39. The micro processor was introduced in

- a. First Generation Computer b. Second Generation Computer
c. Third Generation Computer d. Fourth Generation Computer

40. The following was the first electronic computer-

- a. ENIAC b. MARKI c. EDVAC d. UNIVAC I

41. Flow chart is -

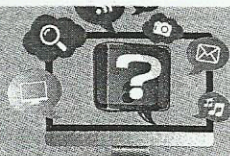
- a. An algorithm expresses in a graphical form
b. An algorithm expressed in a non graphical form
c. Instruction written in natural language
d. None of these

42. The idea of Analytical Engine was given by
 a. Blaise Pascal b. Charles Babbage c. Hollerith d. None of these
43. Shortcut for Paste is
 a. Ctrl + C b. Ctrl + X c. Ctrl + V d. None of these
44. He is called the Father of computer.
 a. Elvis Presly b. Bill Gates c. Charles Babbage d. Blaise Pascal
45. The brain of any computer system is
 a. Control Unit b. ALU c. CPU d. Storage Unit
46. Which operation is not performed by computer?
 a. Inputting b. Processing c. Controlling d. Understanding
47. Extension of PowerPoint presentation is
 a. .xls b. .ppt c. .bas d. .bmp
48. Cut, copy and paste are the part of which of the menu ?
 a. View b. Favorites c. Format d. Edit
49. Multimedia contains: 1.Voice 2. Picture 3. Text
 a. Only 1 and 2 b. All 1, 2 and 3 c. Only 2 and 3 d. None
50. The FD command in Logo means
 a. Forward b. Backward c. Pen down d. Pen up

ANSWER SHEET

Do above questions and check for the answers below.

- | | | | |
|-------------|-------------|-------------|-------------|
| 1. a b c d | 14. a b c d | 27. a b c d | 39. a b c d |
| 2. a b c d | 15. a b c d | 28. a b c d | 40. a b c d |
| 3. a b c d | 16. a b c d | 29. a b c d | 41. a b c d |
| 4. a b c d | 17. a b c d | 30. a b c d | 42. a b c d |
| 5. a b c d | 18. a b c d | 31. a b c d | 43. a b c d |
| 6. a b c d | 19. a b c d | 32. a b c d | 44. a b c d |
| 7. a b c d | 20. a b c d | 33. a b c d | 45. a b c d |
| 8. a b c d | 21. a b c d | 34. a b c d | 46. a b c d |
| 9. a b c d | 22. a b c d | 35. a b c d | 47. a b c d |
| 10. a b c d | 23. a b c d | 36. a b c d | 48. a b c d |
| 11. a b c d | 24. a b c d | 37. a b c d | 49. a b c d |
| 12. a b c d | 25. a b c d | 38. a b c d | 50. a b c d |
| 13. a b c d | 26. a b c d | | |



National Cyber Olympiad Practice Sheet

- 1. Which of these shows computers in ascending order of their speed and size?**
 - (a) Mainframes, tablets, laptops, and supercomputers
 - (b) Laptops, tablets, supercomputers, and mainframes
 - (c) Tablets, laptops, mainframes, and supercomputers
 - (d) Supercomputers, mainframes, laptops, and tablets
- 2. Which of these refers to the main memory of a computer?**
 - (a) RAM and ROM
 - (b) RAM
 - (c) CD ROM and DVD
 - (d) Pen drive and USB
- 3. Which of these provides options to customize the appearance and functionality of a Windows computer?**
 - (a) Programs menu
 - (b) Control Panel
 - (c) System tray
 - (d) Task bar
- 4. I want to increase the double-click and dragging actions' speed for the mouse. Which of these tabs will help me do so?**
 - (a) The Buttons tab in the Mouse Properties dialog box
 - (b) Wheel and Hardware in the Mouse Properties dialog box
 - (c) The Device Manager tool in the Control Panel
 - (d) The System option in the Control Panel
- 5. Which of the following functions does the Disk Cleanup tool help us to do?**
 - (a) Remove the downloaded files
 - (b) Empty the Recycle bin
 - (c) Remove installed programs that you no longer use
 - (d) All of these
- 6. Which of these would you use to create a table in a Word document?**
 - (a) The Insert Table grid option
 - (b) The Insert Table dialog box
 - (c) The Draw Table option
 - (d) All of these
- 7. In a table inserted in a Word document, I want more than one column under one heading. Which of these options would help me to do so?**
 - (a) Borders and Shading
 - (b) Design tab
 - (c) Split Cells and Merge Cells
 - (d) Insert Table dialog box
- 8. Which of these features in Word helps you to create personalized letters and envelopes?**
 - (a) Drawing Tools
 - (b) References
 - (c) Header and Footer
 - (d) Mail Merge
- 9. Which of these helps to give information about references for text in a document?**
 - (a) Table of Contents
 - (b) Mail Merge
 - (c) Footnotes
 - (d) Header & Footer
- 10. Which tab would you use to add the copyright symbol in a Word document?**
 - (a) Reference
 - (b) Insert
 - (c) Mailings
 - (d) Home

- ii. Which of these refers to the vertical divisions in an Excel worksheet?
- (a) Row (b) Column
(c) Cell (d) Cell address
12. Mayank clicked on the row header of row 3 in an Excel worksheet. What did he select in the worksheet?
- (a) All the cells
(b) An entire column
(c) An entire row
(d) A range of cells that were not next to each other
13. Pooja entered data in a cell. The data was longer than what could be accommodated on one line. What should she do in order to get the data onto the next line in the same cell?
- (a) Press Alt+Enter (b) Press Ctrl+Alt
(c) Press Shift+Alt (d) None of these
14. I want to present data using a bar graph. Which of these programs should I use?
- (a) MS Excel (b) MS Word
(c) QBASIC (d) MS PowerPoint
15. Pooja is looking for the Insert Sheet Rows option in Excel. Where will she find it?
- (a) The Cells group in the Home tab
(b) The Clipboard group in the Home tab
(c) The Column option in the Insert tab
(d) The Alignment option in the Home tab
16. Which of these do we type in the address box while browsing the Internet?
- (a) The URL of a website (b) The DSL of a website
(c) The ISP's email (d) A website administrator's email
17. Which folder of your email account contains all the mails that have been composed but not been sent?
- (a) Spam (b) Drafts
(c) Starred (d) Trash
18. Which of these helps to load an existing QBASIC program on a computer?
- (a) New (b) Menu
(c) Open (d) Save As
19. Which of these menus contains buttons to execute or start a program in QBASIC?
- (a) File (b) Search
(c) Edit (d) Run
20. Which of these is false about string constants in QBASIC?
- (a) Strings contain numerals on which arithmetic operations can be performed.
(b) A double quote is not allowed in a string.
(c) Strings contain a sequence of characters in double quotation marks.
(d) Strings can have blank spaces between characters.

Answers
1. (c); 2. (a); 3. (b); 4. (a); 5. (d); 6. (d); 7. (c); 8. (d); 9. (c); 10. (b); 11. (b); 12. (c); 13. (a); 14. (a); 15. (a); 16. (a); 17. (b); 18. (c); 19. (d); 20. (a)